

Salmon Enhancement Program in Japan



Masa-aki Fukuwaka



Hokkaido National Fisheries Research Institute
Japan Fisheries Research and Education Agency

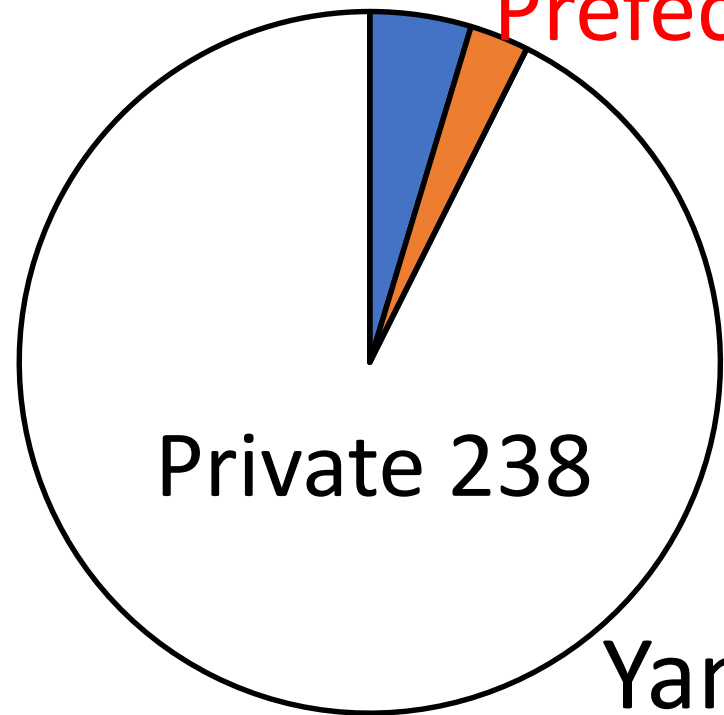
Salmon Hatcheries in Japan

Total 257

National 12

Prefectural 7

Private 238



Hokkaido

127

Aomori 13

Akita 10

Iwate 33

Yamagata 17

Miyagi 14

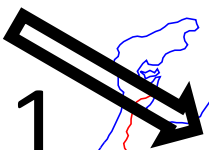
Niigata 22

Fukushima 6

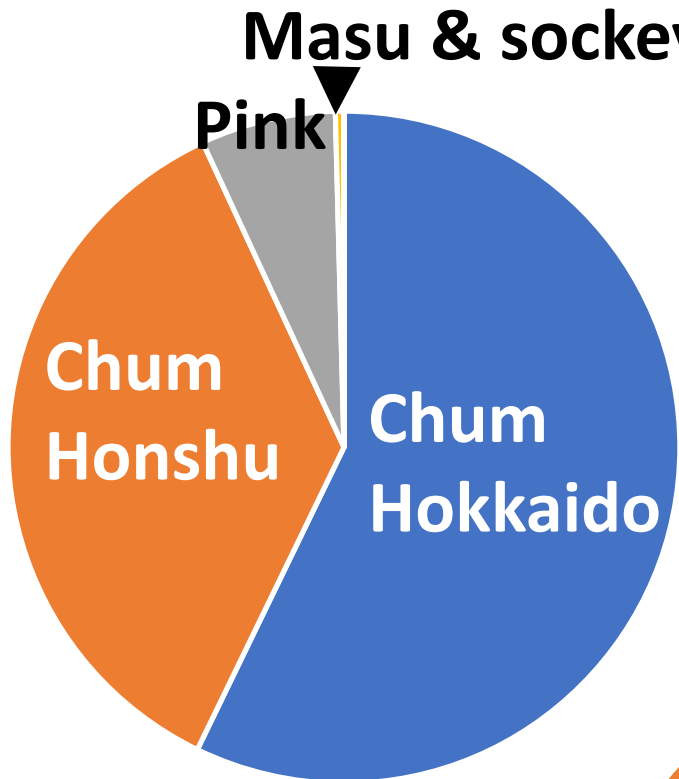
Toyama 11

Ibaraki 3

Ishikawa 1

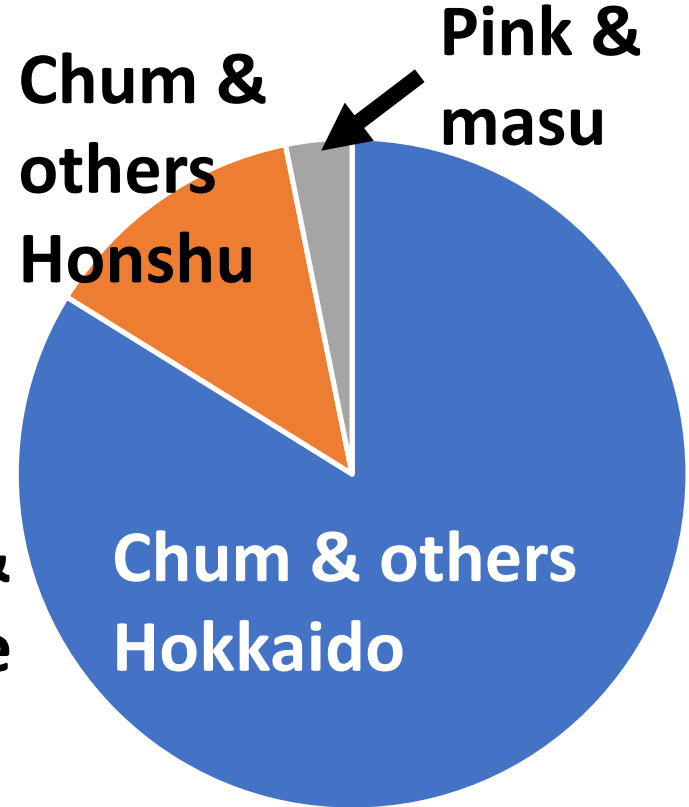
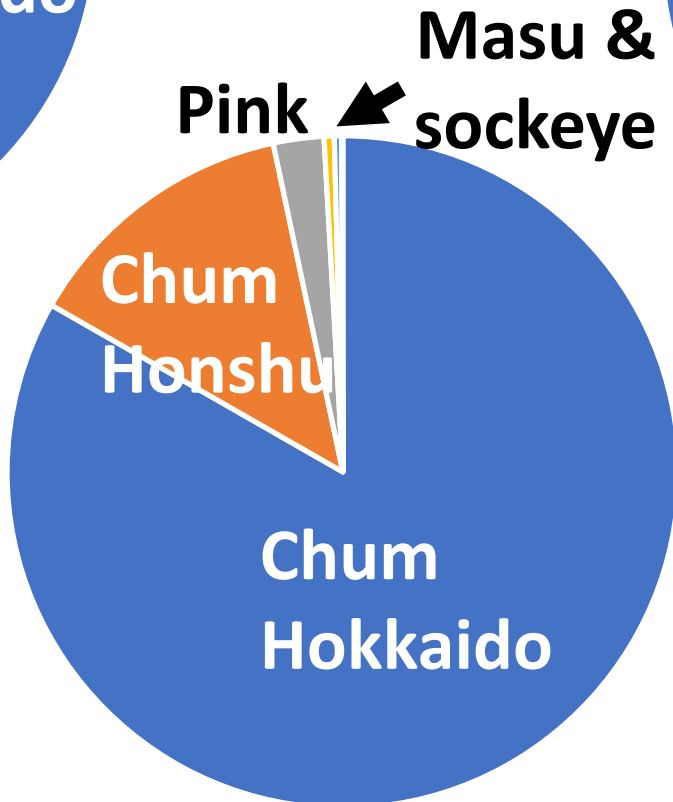


Salmon Hatchery Releases and Catches



2016 Hatchery Releases
1,898 millions
 (NPAFC Doc. 1694 at NPAFC Website)

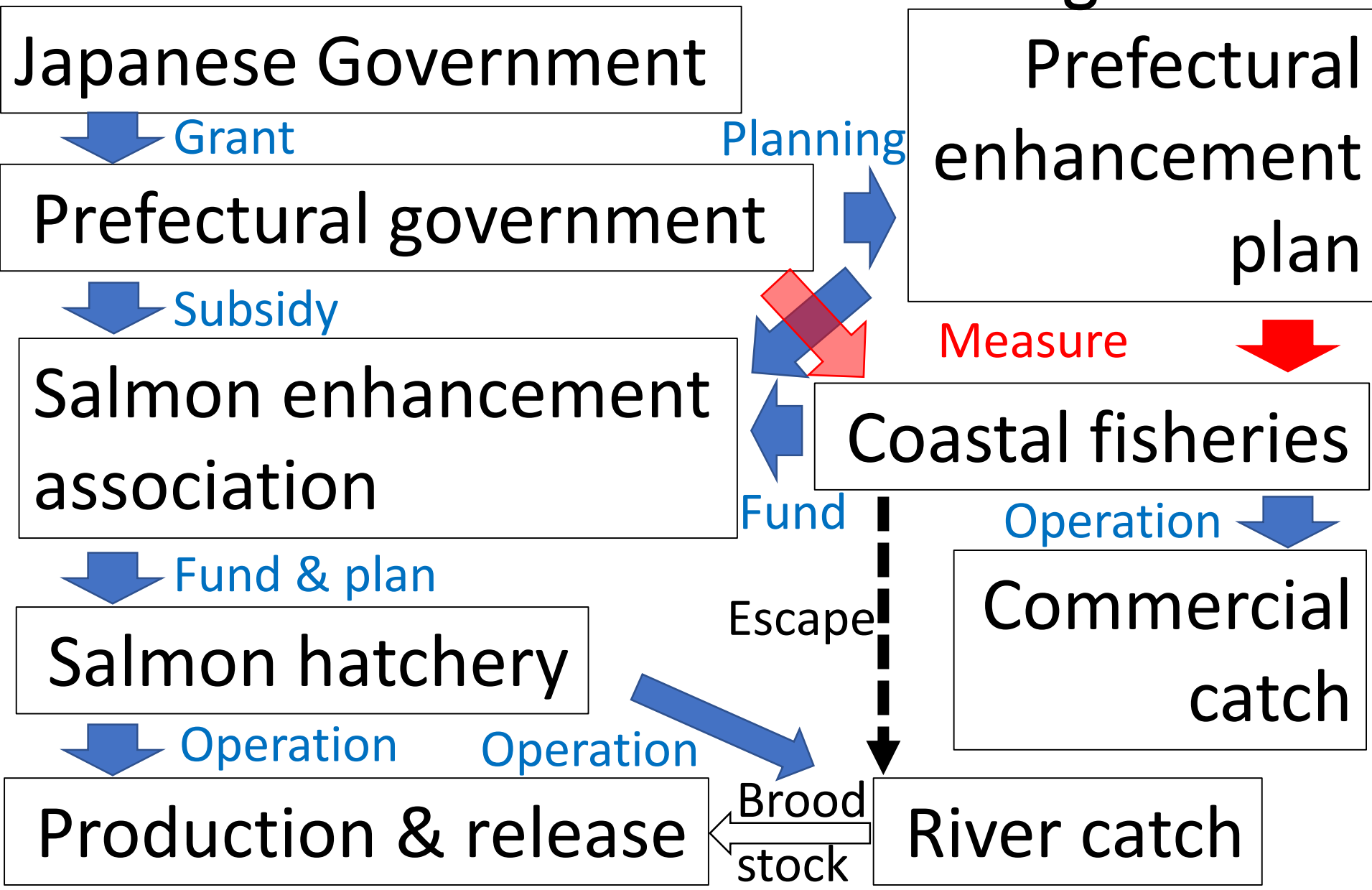
2015 Catch
140 thousand tonnes



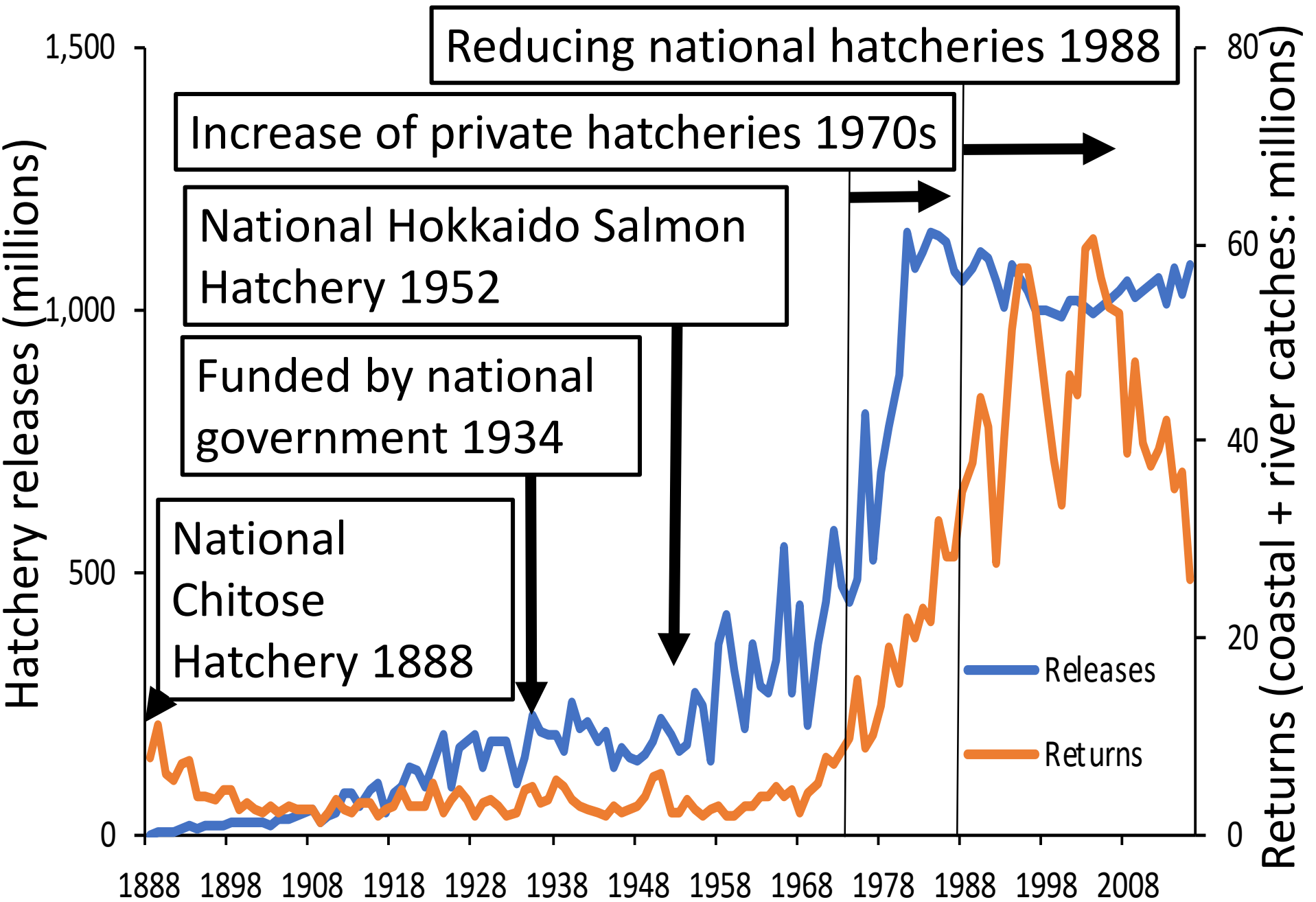
2015 Value
72 billion yen

Data from MAFF Website

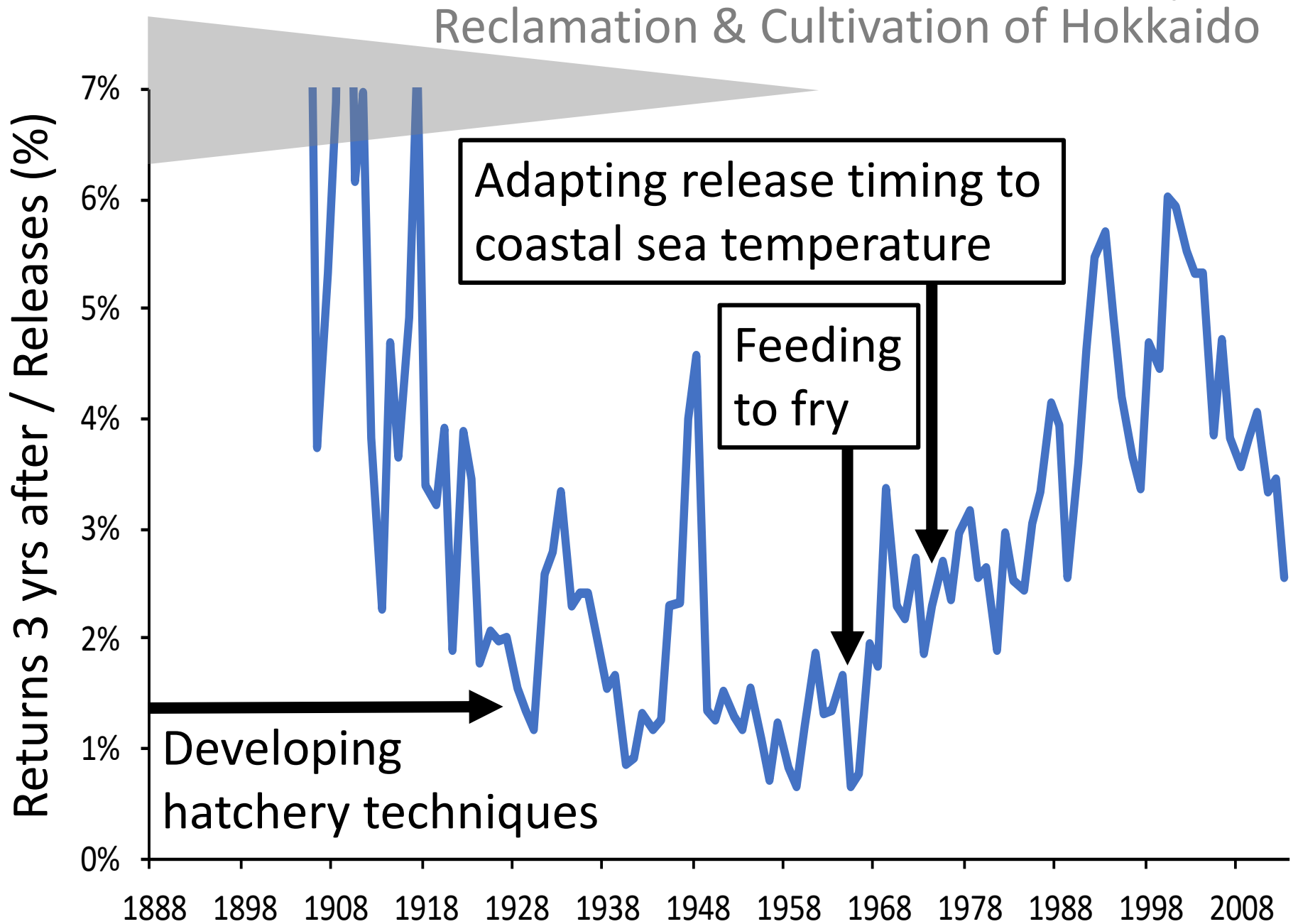
Roles of A Prefectural Government for Chum Salmon Enhancement and Management



Hokkaido Chum Hatchery Releases & Returns



Hokkaido Chum Return Rate & Techniques



Problems in Japanese Salmon Enhancement

- Rehabilitation of wild salmon stocks
land and water uses threaten wild stocks
- Adaptation of hatchery techniques to changing climate
water temperature, precipitation, etc
- Branding and marketing of hatchery-released and/or wild salmon
high enhance- and management cost

Thank you !

